

Crate grab model TKA a/i

Capacity 250 kg

The easy-handling crate grab, which grabs on the side plates or the front sides of the crate, transports crates safely and without damaging them.

The moveable jaws press the edge of the crate gently against the outside grab support rails. Stacking boxes made of steel or plastic will not get deformed. After the box has been set down, the safety device holds the grab open.

When lifting the crate and grabbing the support rails, the safety device must be manually pulled back until it lies over the safety bolt. With further lifting, the jaws grab under the outer top edge of the crate and lift it up safely.

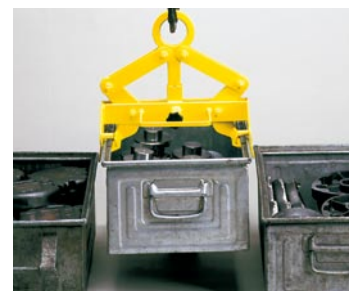
The crate grab is available as an external or internal operating grab.



Model TKA.../...a external operating



Model TKA.../...i internal operating

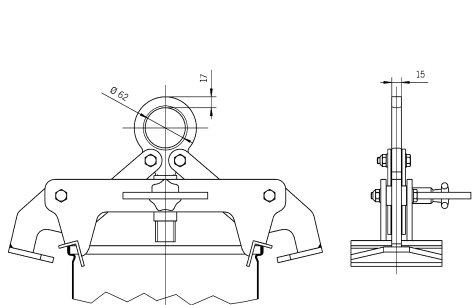


Model TKA.../...i internal operating

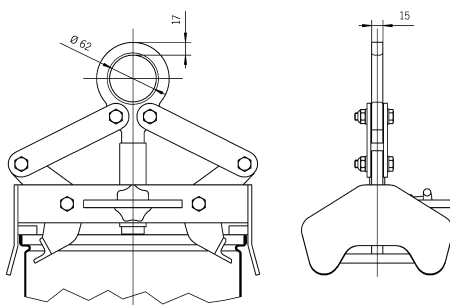
Please provide the crate dimensions or a sample crate when ordering.

Technical data model TKA a/i

Model	EAN-No. 4025092*	Weight kg	Capacity kg	Jaw capacity mm
TKA 0.25/320a	*558082	9.3	250	320
TKA 0.25/480a	*558044	9.3	250	480
TKA 0.25/600a	*558099	9.3	250	600
TKA 0.25/320i	*558051	8.5	250	320
TKA 0.25/480i	*558068	8.5	250	480
TKA 0.25/600i	*558075	8.5	250	600



Model TKA.../...a external operating



Model TKA.../...i internal operating