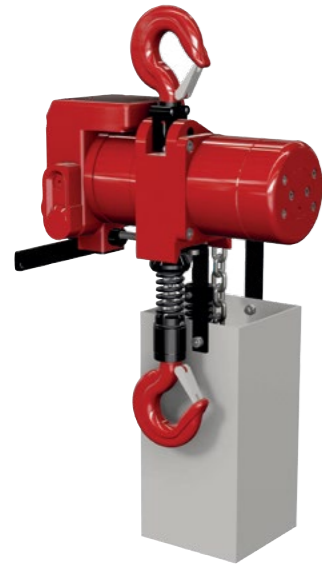


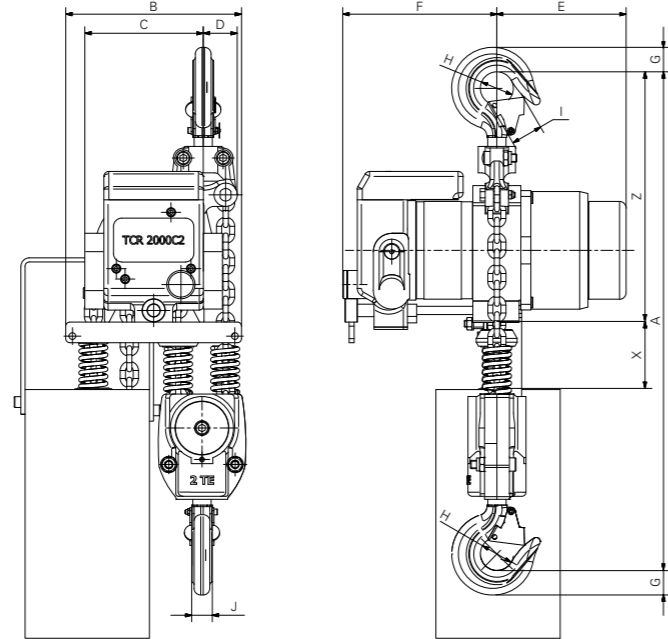
HEAVY DUTY HOISTS

TCR Serie (1.000 & 2.000 kg)

These Red Rooster Air Chain Hoists are especially developed with a robust cast steel body for heavy industrial use. The valve block is the same for the TCR-600250 - TCR-2000/2, which means: less spare parts required. Standard with load limiter.



TCR-1000



STANDARD FEATURES

- Optimum control of the load, very precise positioning
- Compact design
- Mechanical endstop system
- Load limiter built-in without loss of headroom
- Cord or pendant control
- Low noise level (83 dBA)
- Air pressure 0,4 - 0,63 MPa

RECOMMENDED SMC AIR TREATMENT UNIT
AC60-F10DM-8-B

Model*	TCR-1000C TCR-1000PE	TCR-2000C2 TCR-2000P2E
WLL	1.000 kg	2.000 kg
Lifting speed with load	6 m/min.	3 m/min.
Lifting speed w/o load	11,3 m/min.	5,7 m/min.
Lowering speed with load	10,3 m/min.	5,2 m/min.
Air consumption lifting	25 l/sec	25 l/sec
Air consumption lowering	28 l/sec	30 l/sec
Air connection	PT 1/2"	PT 1/2"
Minimum hose diam	1/2"	1/2"
Air pressure	0,4-0,63 MPa	0,4-0,63 MPa
Weight with 3m hol	34 kg	39,7 kg
Additional metre hol	1,1 kg	2,2 kg
Chain falls	1 (7,1 x 21 mm)	2 (7,1 x 21 mm)

*C = Cord control / PE = Pendant control

Model	A	B	C	D	E	F	G	H	I	J	X	Z
TCR-1000	485	212	139	73	156	186	29	ø40	29	25	100	250
TCR-2000	595	212	166	46	156	186	37	ø45	29	30	100	280

All measurements are in mm / Information subject to change without notice.

<p>ATEX MARKING</p>	STANDARD ATEX:	OPTIONAL ATEX:	PENDANT CONTROL	CORD CONTROL	
	GAS II 3G Ex h IIA T4 Gc	GAS II 2G Ex h IIB T4 Gb	GAS II 2G Ex h IIC T4 Gb		
	DUST II 3D Ex h IIIA 135°C Dc	DUST II 2D Ex h IIIB 135°C Db	DUST II 2D Ex h IIIC 135°C Db		

HEAVY DUTY HOISTS

TMH Serie (3.000 & 6.000 kg)

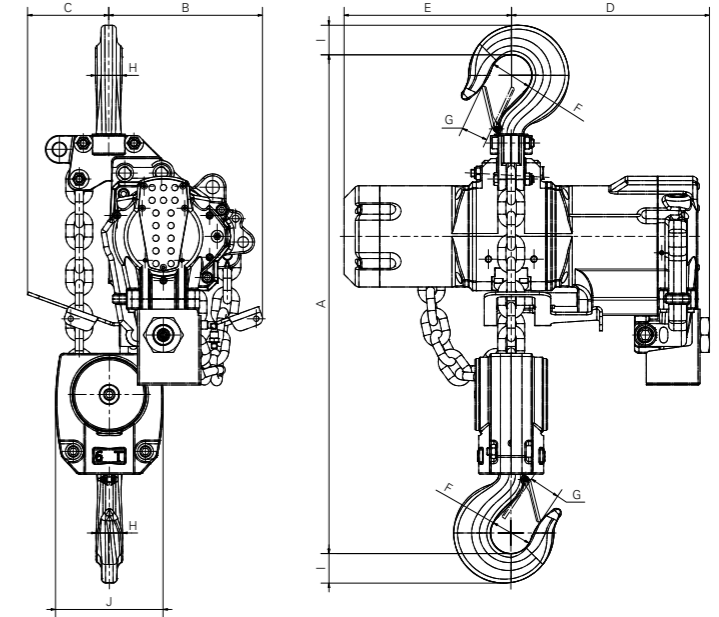
The Red Rooster TMH series air chain hoists have the highest lifting speed with the lowest headroom on the hoist market. With M4 classification of mechanism this hoist is extremely reliable. This hoist will guarantee the continuity of your process. The TMH hoists are designed with a full load supporting eye for installation, securing (during lift applications) the hoist for extra safety.



TMH-3000



TMH-6000



STANDARD FEATURES

- Optimum control of the load, very precise positioning
- Mechanical end stop system
- Load limiter built-in without loss of headroom
- Cord or pendant control
- Low noise level (83 dBA)
- Air pressure 0,4 - 0,63 MPa
- Models with indication LF are Lubrication Free

RECOMMENDED SMC AIR TREATMENT UNIT
AC60-F10DM-8-B

Model*	TMH-3000C TMH-3000PE	TMH-3000LFC TMH-3000LFPE	TMH-6000C2 TMH-6000P2E	TMH-6000LFC2 TMH-6000LFP2E
WLL	3.000 kg	3.000 kg	6.000 kg	6.000 kg
Lifting speed with load	5,4 m/min.	3,1 m/min.	2,7 m/min.	1,6 m/min.
Lifting speed w/o load	10,8 m/min.	6,4 m/min.	5,4 m/min.	3,2 m/min.
Lowering speed with load	10,2 m/min.	2,8 m/min.	5,1 m/min.	2,8 m/min.
Air consumption lifting	56 l/sec	56 l/sec	56 l/sec	56 l/sec
Air consumption lowering	68 l/sec	68 l/sec	68 l/sec	68 l/sec
Air connection	PT 1"	PT 1"	PT 1"	PT 1"
Minimum hose diam	3/4"	3/4"	3/4"	3/4"
Air pressure	0,4-0,63 MPa	0,4-0,63 MPa	0,4-0,63 MPa	0,4-0,63 MPa
Weight with 3m hol	99 kg	99 kg	124 kg	124 kg
Additional metre hol	3,8 kg	3,8 kg	7,6 kg	7,6 kg
Chain falls	1 (13 x 36 mm)	1 (13 x 36 mm)	2 (13 x 36 mm)	2 (13 x 36 mm)

*C = Cord control / PE = Pendant control

Type	A	B	C	D	E	F	G	H	I	J
TMH-3000	537	190	125	265	315	ø50	34	35	45	/
TMH-6000	737	245	130	265	315	ø65	42	42	49	170

All measurements are in mm / Information subject to change without notice.

<p>ATEX MARKING</p>	STANDARD ATEX:	OPTIONAL ATEX:	PENDANT CONTROL	CORD CONTROL	
	GAS II 3G Ex h IIA T4 Gc	GAS II 2G Ex h IIB T4 Gb	GAS II 2G Ex h IIC T4 Gb		
	DUST II 3D Ex h IIIA 135°C Dc	DUST II 2D Ex h IIIB 135°C Db	DUST II 2D Ex h IIIC 135°C Db		

HEAVY DUTY HOISTS

TMH Serie (9.000, 12.000 & 15.000 kg)

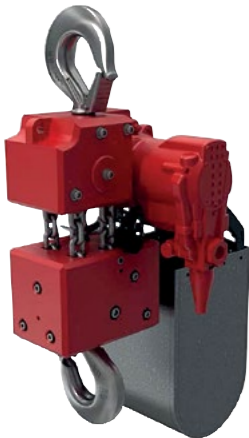
The Red Rooster TMH series air chain hoists have the highest lifting speed with the lowest headroom on the hoist market. With M4 classification of mechanism this hoist is extremely reliable. This hoist will guarantee the continuity of your process.



TMH-9000/3



TMH-12000/4



TMH-15000/5

Model*	TMH-9000C3	TMH-12000C4	TMH-15000C5
WLL	9.000 kg	12.000 kg	15.000 kg
Lifting speed with load	1,8 m/min.	1,35 m/min.	1,08 m/min.
Lifting speed w/o load	3,6 m/min.	2,7 m/min.	2,16 m/min.
Lowering speed with load	3,4 m/min.	2,55 m/min.	2,04 m/min.
Air consumption lifting	58,3 l/sec	58,3 l/sec	58,3 l/sec
Air consumption lowering	70 l/sec	70 l/sec	70 l/sec
Air connection	PT 1"	PT 1"	PT 1"
Minimum hose diam	3/4"	3/4"	3/4"
Air pressure	0,4-0,63 MPa	0,4-0,63 MPa	0,4-0,63 MPa
Weight with 3m hol	170	210	280
Additional metre hol	11,4 kg	15,2 kg	19 kg
Chain falls	3 (13 x 36 mm)	4 (13 x 36 mm)	5 (13 x 36 mm)

Model*	TMH-9000LFC3	TMH-12000LFC4	TMH-15000LFC5
WLL	9.000 kg	12.000 kg	15.000 kg
Lifting speed with load	1 m/min.	0,8 m/min.	0,6 m/min.
Lifting speed w/o load	2,1 m/min.	1,6 m/min.	1,3 m/min.
Lowering speed with load	1,9 m/min.	1,4 m/min.	1,1 m/min.
Air consumption lifting	51 l/sec	51 l/sec	51 l/sec
Air consumption lowering	61 l/sec	61 l/sec	61 l/sec
Air connection	PT 1"	PT 1"	PT 1"
Minimum hose diam	3/4"	3/4"	3/4"
Air pressure	0,4-0,63 MPa	0,4-0,63 MPa	0,4-0,63 MPa
Weight with 3m hol	170	210	280
Additional metre hol	11,4 kg	15,2 kg	19 kg
Chain falls	3 (13 x 36 mm)	4 (13 x 36 mm)	5 (13 x 36 mm)

*C = Cord control / PE = Pendant control



ATEX MARKING

STANDARD ATEX:

GAS
II 3G Ex h IIA T4 Gc
DUST
II 3D Ex h IIIA 135°C Dc

OPTIONAL ATEX:

GAS
II 2G Ex h IIB T4 Gb
DUST
II 2D Ex h IIIB 135°C Db

GAS
II 2G Ex h IIC T4 Gb
DUST
II 2D Ex h IIIC 135°C Db

PENDANT CONTROL



CORD CONTROL



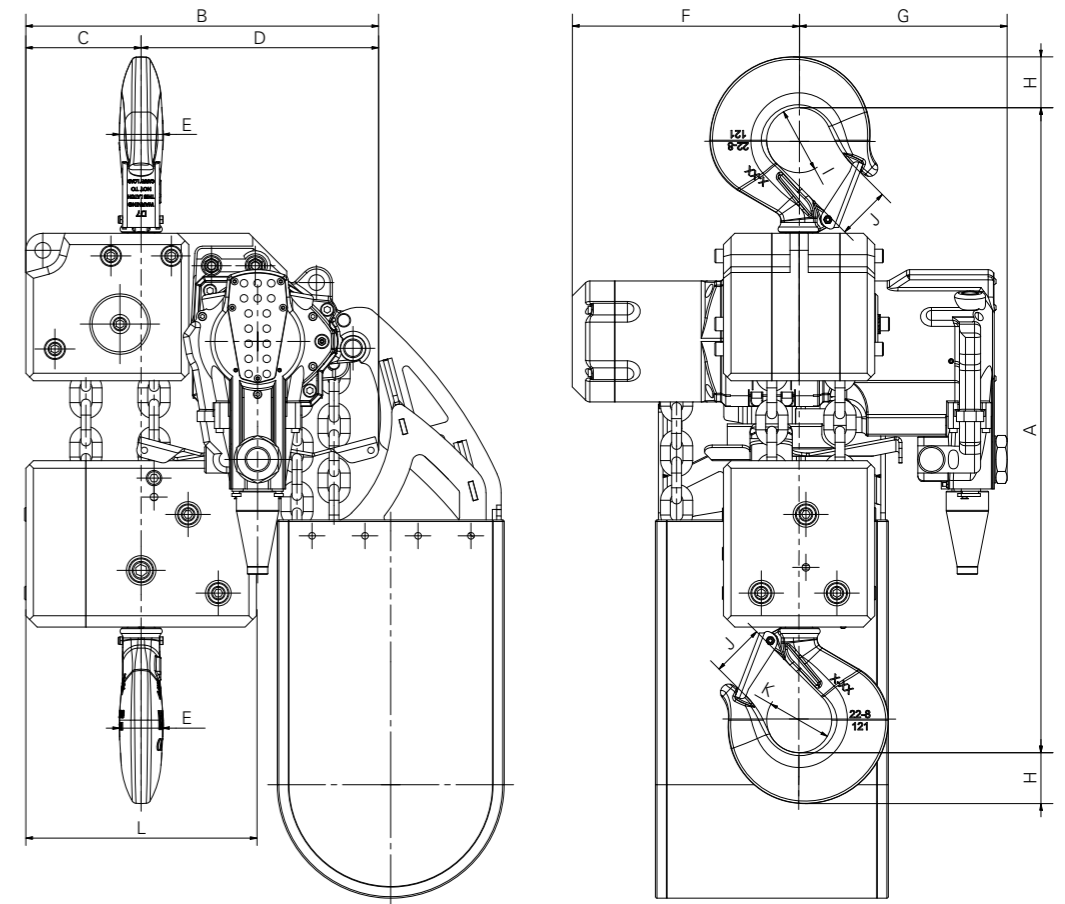
HEAVY DUTY HOISTS

TMH Serie (9.000, 12.000 & 15.000 kg)

STANDARD FEATURES

- Optimum control of the load, very precise positioning
- Mechanical end stop system
- Load limiter built-in without loss of headroom
- Cord or pendant control
- Low noise level (83 dBA)
- Air pressure 0,4 - 0,63 MPa
- Models with indication
LF are Lubrication Free

RECOMMENDED SMC AIR TREATMENT UNIT AC60-F10DM-8-B



Type	A	B	C	D	E	F	G	H	I	J	K	L
TMH-9000/3	800	455	160	295	43	265	310	60	ø75	53	ø75	270
TMH-12000/4	856	398,5	149,5	249	52	309	266	67	ø84	58	ø84	/
TMH-15000/5	855	466	152,5	313,5	52	300	275	67	ø84	58	ø75	/

All measurements are in mm / Information subject to change without notice

HEAVY DUTY HOISTS

TMH Serie (10.000, 15.000 & 20.000 kg)

The Red Rooster TMH series air chain hoists have the highest lifting speed with the lowest headroom on the hoist market. With M4 classification of mechanism this hoist is extremely reliable. This hoist will guarantee the continuity of your process.



TMH-10/2

Model*	TMH-10C2 TMH-10P2E	TMH-15C3 TMH-15P3E	TMH-20C4 TMH-20P4E
WLL	10.000 kg	15.000 kg	20.000 kg
Lifting speed with load	1,6 m/min.	1,05 m/min.	0,8 m/min.
Lifting speed w/o load	3,3 m/min.	2,2 m/min.	1,6 m/min.
Lowering speed with load	3,2 m/min.	2,1 m/min.	1,6 m/min.
Air consumption lifting	58,3 l/sec	58,3 l/sec	58,3 l/sec
Air consumption lowering	71,7 l/sec	71,7 l/sec	71,7 l/sec
Air connection	PT 1"	PT 1"	PT 1"
Minimum hose diam	1"	1"	1"
Air pressure	0,4-0,63 MPa	0,4-0,63 MPa	0,4-0,63 MPa
Weight with 3m hol	206	316	466
Additional metre hol	11,4	17,1	22,8
Chain falls	2 (16 x 45 mm)	3 (16 x 45 mm)	4 (16 x 45 mm)

*C = Cord control / PE = Pendant control

STANDARD FEATURES

- Optimum control of the load, very precise positioning
- Mechanical end stop system
- Load limiter built-in without loss of headroom
- Cord or pendant control
- Low noise level (83 dBA)
- Air pressure 0,4 - 0,63 MPa (4-6,3 bar)

RECOMMENDED SMC AIR TREATMENT UNIT

AC60-F10DM-8-B



ATEX MARKING

STANDARD ATEX:

GAS
II 3G Ex h IIA T4 Gc
DUST
II 3D Ex h IIIA 135°C Dc

OPTIONAL ATEX:

GAS
II 2G Ex h IIB T4 Gb
DUST
II 2D Ex h IIIB 135°C Db

GAS
II 2G Ex h IIC T4 Gb
DUST
II 2D Ex h IIIC 135°C Db

PENDANT CONTROL

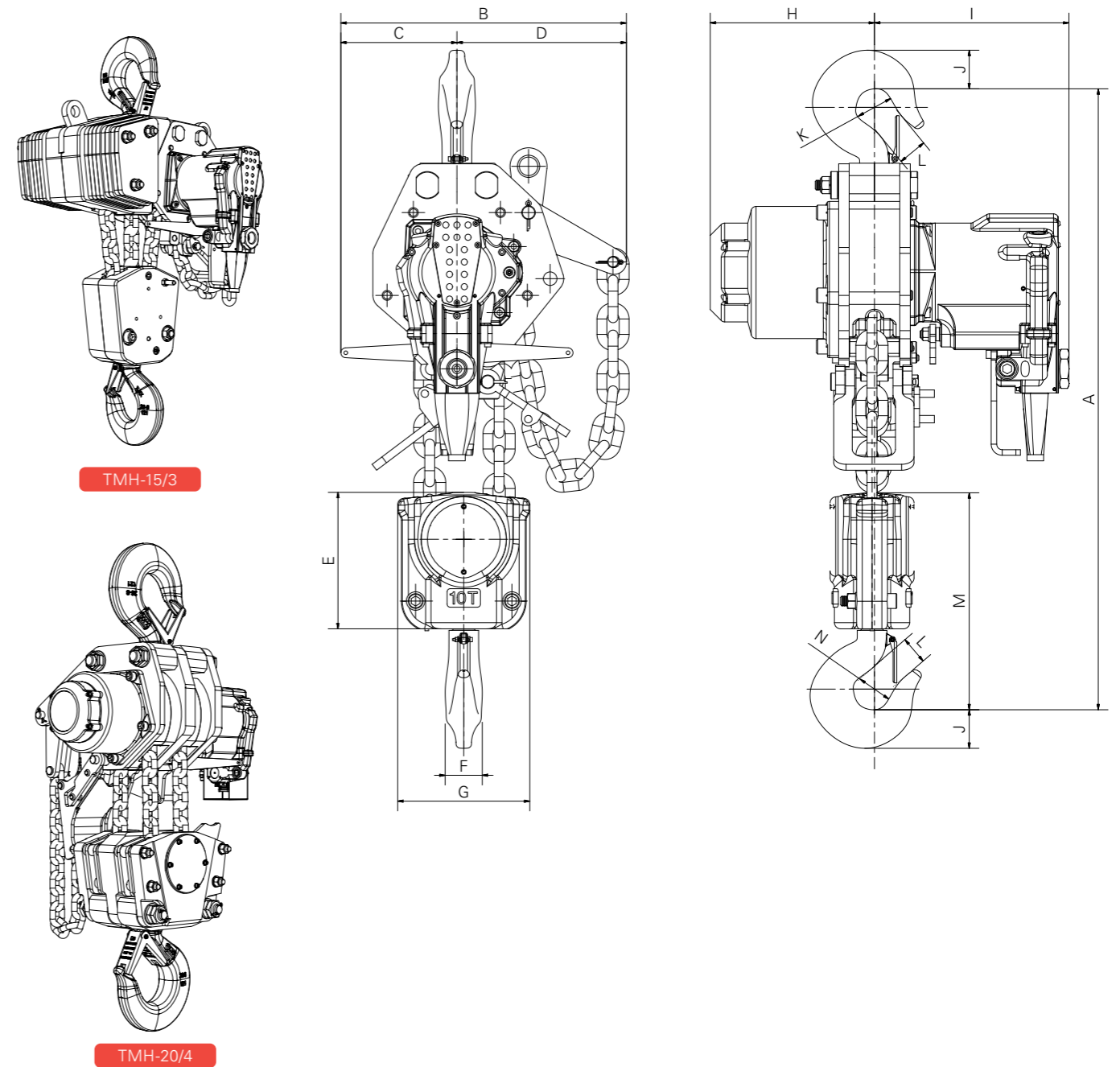


CORD CONTROL



HEAVY DUTY HOISTS

TMH Serie (10.000, 15.000 & 20.000 kg)



Type	A	B	C	D	E	F	G	H	I	J	K	L	M	N
TMH-10/2	860	463	188	275	221	60	214	266	315	65	ø60	45	351	ø61
TMH-15/3	880	695	635	255	270	52	250	266	315	67	ø84	58	436	ø84
TMH-20/4	1028	500	150	350	/	64	315	326	387	80	ø110	78	475	ø110

All measurements are in mm / Information subject to change without notice

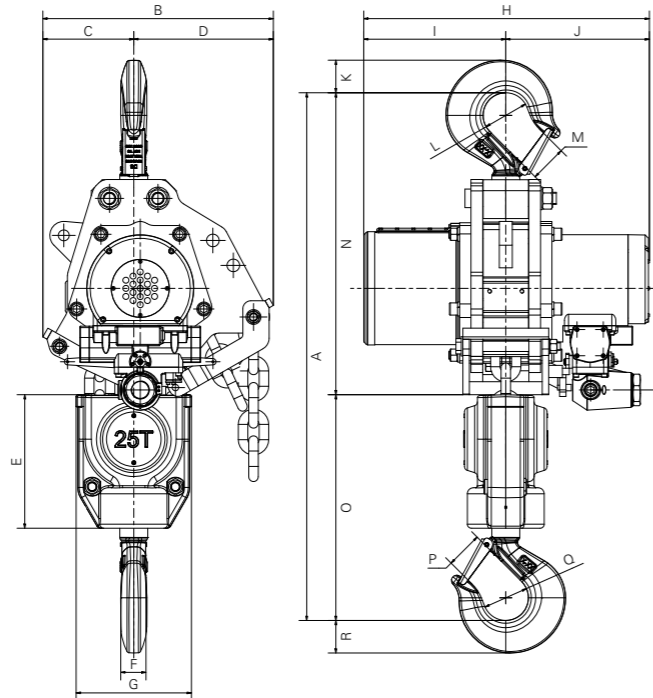
HEAVY DUTY HOISTS

TMH Serie (25.000 & 30.000 kg)

The Red Rooster TMH series air chain hoists have the highest lifting speed with the lowest headroom on the hoist market. With classification of mechanism, M3 for the TMH-25 and M2 for the TMH-30, these hoists are extremely reliable. This hoist will guarantee the continuity of your process.



TMH-25/2 | TMH-30/2



STANDARD FEATURES

- Optimum control of the load, very precise positioning
- Mechanical end stop system
- Load limiter built-in without loss of headroom
- Cord or pendant control
- Low noise level (82 dBA)
- Air pressure 0,4 - 0,63 MPa (4-6,3 bar)

RECOMMENDED SMC AIR TREATMENT UNIT
AC60-F10DM-8-B

Model*	TMH-25C2 TMH-25P2E	TMH-30C2 TMH-30P2E
WLL	25.000 kg	30.000 kg
Lifting speed with load	1,4 m/min.	1,0 m/min.
Lifting speed w/o load	2,7 m/min.	2,7 m/min.
Lowering speed with load	3 m/min.	2,7 m/min.
Air consumption lifting	108 l/sec	108 l/sec
Air consumption lowering	180 l/sec	166 l/sec
Air connection	PT 1½"	PT 1½"
Minimum hose diam	1½"	1½"
Air pressure	0,4-0,63 MPa	0,4-0,63 MPa
Weight with 3m hol	581 kg	581 kg
Additional metre hol	24,4 kg	24,4 kg
Chain falls	2 (23,5 x 66 mm)	2 (23,5 x 66 mm)

*C = Cord control / PE = Pendant control

Type	A	B	C	D	E	F	G	H	I	J	K	L	M	N	O	P	Q	R
TMH-25/2	1290	566	223	343	330	82	285	708	352	356	90	ø100	71	732	558	71	100	90
TMH-30/2	1290	566	223	343	330	82	285	708	352	356	90	ø100	71	732	558	71	100	90

All measurements are in mm / Information subject to change without notice



ATEX MARKING

STANDARD ATEX:

GAS
II 3G Ex h IIA T4 Gc
DUST
II 3D Ex h IIIA 135°C Dc

OPTIONAL ATEX:

GAS
II 2G Ex h IIB T4 Gb
DUST
II 2D Ex h IIIB 135°C Db

GAS
II 2G Ex h IIC T4 Gb
DUST
II 2D Ex h IIIC 135°C Db

PENDANT CONTROL



CORD CONTROL

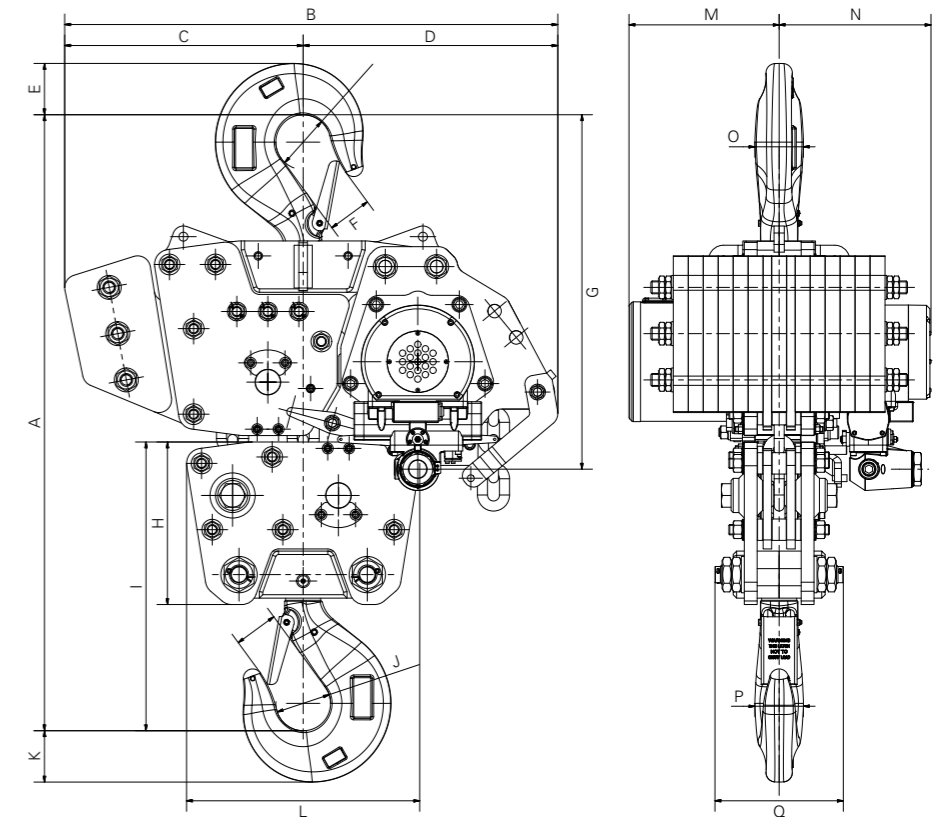


HEAVY DUTY HOISTS

TMH Serie (37.500 & 45.000 kg)



TMH-37,5/3 | TMH-45/3



STANDARD FEATURES

- Optimum control of the load, very precise positioning
- Mechanical end stop system
- Load limiter built-in without loss of headroom
- Cord or pendant control
- Low noise level (82 dBA)
- Air pressure 0,4 - 0,63 MPa (4-6,3 bar)

RECOMMENDED SMC AIR TREATMENT UNIT
AC60-F10DM-8-B

Model*	TMH-37,5/C3 TMH-37,5/P3E	TMH-45/C3 TMH45/P3E
WLL	37.500 kg	45.000 kg
Lifting speed with load	0,9 m/min.	0,65 m/min.
Lifting speed w/o load	1,8 m/min.	1,8 m/min.
Lowering speed with load	2 m/min.	1,8 m/min.
Air consumption lifting	108 l/sec	108 l/sec
Air consumption lowering	180 l/sec	166 l/sec
Air connection	PT 1½"	PT 1½"
Minimum hose diam	1½"	1½"
Air pressure	0,4-0,63 MPa	0,4-0,63 MPa
Weight with 3m hol	1.300 kg	1.300 kg
Additional metre hol	36,6 kg	36,6 kg
Chain falls	3 (23,5 x 66 mm)	3 (23,5 x 66 mm)

*C = Cord control / PE = Pendant control

Type	A	B	C	D	E	F	G	H	I	J	K	L	M	N	O	P	Q
TMH-37,5/3	1440	1150	557,5	592,5	118	90	830	380	675	ø125	118	545	352	356	112	112	300
TMH-45/3	1440	1150	557,5	592,5	118	90	830	380	675	ø125	118	545	352	356	112	112	300

All measurements are in mm / Information subject to change without notice



ATEX MARKING

STANDARD ATEX:

GAS
II 3G Ex h IIA T4 Gc
DUST
II 3D Ex h IIIA 135°C Dc

OPTIONAL ATEX:

GAS
II 2G Ex h IIB T4 Gb
DUST
II 2D Ex h IIIB 135°C Db

GAS
II 2G Ex h IIC T4 Gb
DUST
II 2D Ex h IIIC 135°C Db

PENDANT CONTROL



CORD CONTROL



HEAVY DUTY HOISTS

TMH Serie (50.000 & 60.000 kg)

The Red Rooster TMH series air chain hoists have the highest lifting speed with the lowest headroom on the hoist market. With classification of mechanism, M3 for the TMH-25 and M2 for the TMH-30, these hoists are extremely reliable. This hoist will guarantee the continuity of your process.



TMH-50/4 | TMH-60/4

Model*	TMH-50/C4 TMH-50/P4E	TMH-60/C4 TMH-60/P4E
WLL	50.000 kg	60.000 kg
Lifting speed with load	0,7 m/min.	0,5 m/min.
Lifting speed w/o load	1,3 m/min.	1,3 m/min.
Lowering speed with load	1,5 m/min.	1,3 m/min.
Air consumption lifting	108 l/sec	108 l/sec
Air consumption lowering	180 l/sec	167 l/sec
Air connection	PT 1½"	PT 1½"
Minimum hose diam	1½"	1½"
Air pressure	0,4-0,63 MPa	0,4-0,63 MPa
Weight with 3m hol	1.800 kg	*
Additional metre hol	48,8 kg	48,8 kg
Chain falls	4 (23,5 x 66 mm)	4 (23,5 x 66 mm)

*C = Cord control / PE = Pendant control

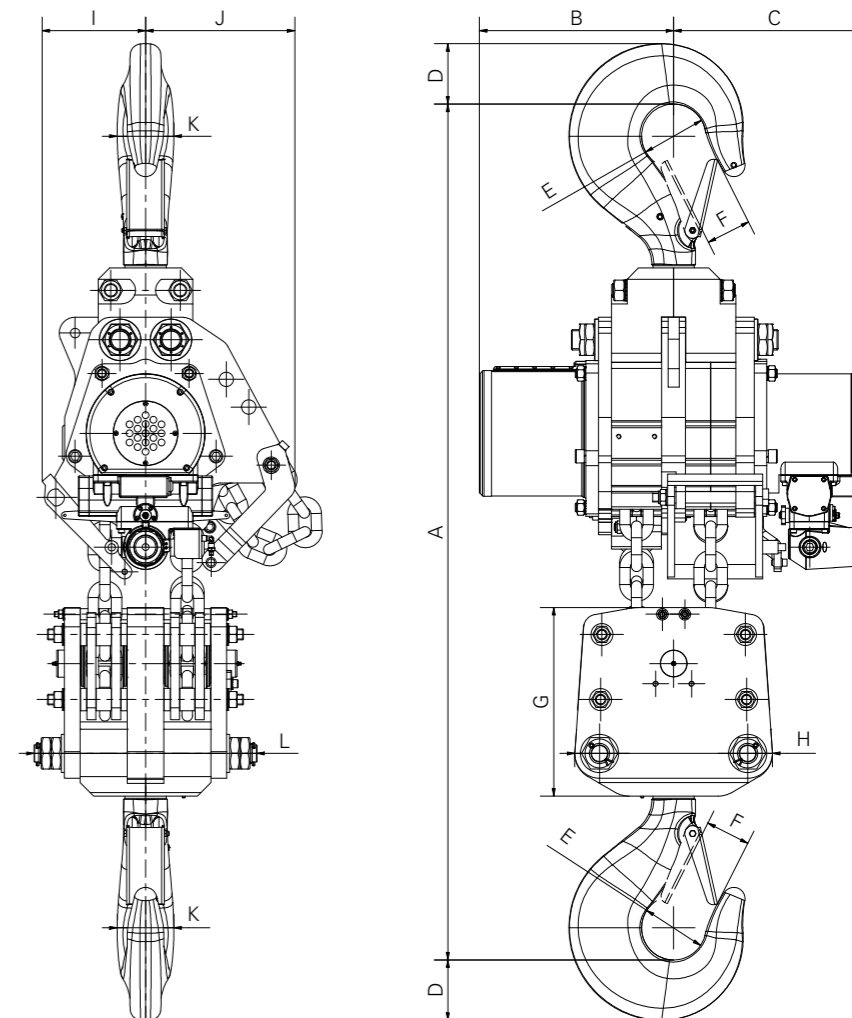
HEAVY DUTY HOISTS

TMH Serie (50.000 & 60.000 kg)

STANDARD FEATURES

- Optimum control of the load, very precise positioning
- Mechanical end stop system
- Load limiter built-in without loss of headroom
- Cord or pendant control
- Low noise level (82 dBA)
- Air pressure 0,4 - 0,63 MPa (4-6,3 bar)

RECOMMENDED SMC AIR TREATMENT UNIT AC60-F10DM-8-B



Type	A	B	C	D	E	F	G	H	I	J	K	L
TMH-50/4	1790 min.	433	446	134	ø140	100	420	440	230	333	125	496
TMH-60/4	1790 min.	433	446	134	ø140	100	420	440	230	333	125	496

All measurements are in mm / Information subject to change without notice



ATEX MARKING

STANDARD ATEX:

GAS
II 3G Ex h IIA T4 Gc
DUST
II 3D Ex h IIIA 135°C Dc

OPTIONAL ATEX:

GAS
II 2G Ex h IIB T4 Gb
DUST
II 2D Ex h IIIB 135°C Db

GAS
II 2G Ex h IIC T4 Gb
DUST
II 2D Ex h IIIC 135°C Db

PENDANT CONTROL



CORD CONTROL

