

Davit Crane SD900

900 – 600 kg

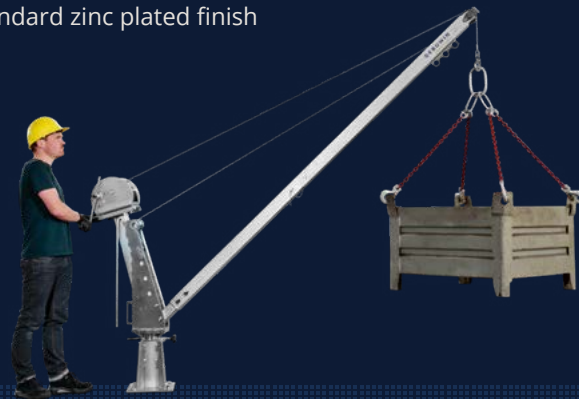
Description

Discover the versatility of our davit crane! With three adjustable positions, this crane effortlessly adapts to your lifting needs. Depending on the position, the lifting capacity varies; up to 900 kg at 1 meter, 800 kg at 1,5 meters and 600 kg at 2 meters.

Thanks to the 360 degree rotation function, you can easily reach the desired position. When in position you can lock the swivel motion for controlled lifting and lowering. The standard galvanized finish ensures durability, while you can attach various winches or even a chain hoist to the davit. Ideal for any project where strength and flexibility come together!

Product specifications

- > adjustable reach: 1 meter, 1,5 meters and 2 meters
- > robust and safe lifting davit crane in compliance with EN13157
- > possible to lock swivel motion
- > davit crane consists of 4 parts - fast installation
- > possible to rotate 360° with arm, or belt on end of boom
- > possible to mount different winches on crane: CW700 & TL1500
- > Standard zinc plated finish



Options

- 40 cm height extension
- available in stainless steel 316
- ATEX certified zone 2 and 22 (EX)
 - CE II 3G Ex IIC T4 Gc, -20°C<T amb <+70°C
 - CE II 3D Ex IIIC T135°C Dc, -20°C<T amb <+70°C
- custom options possible - [on request](#)

Accessories

- floor & wall sockets
- 3 carry bags
- webbing belt to swivel davit for heavy loads

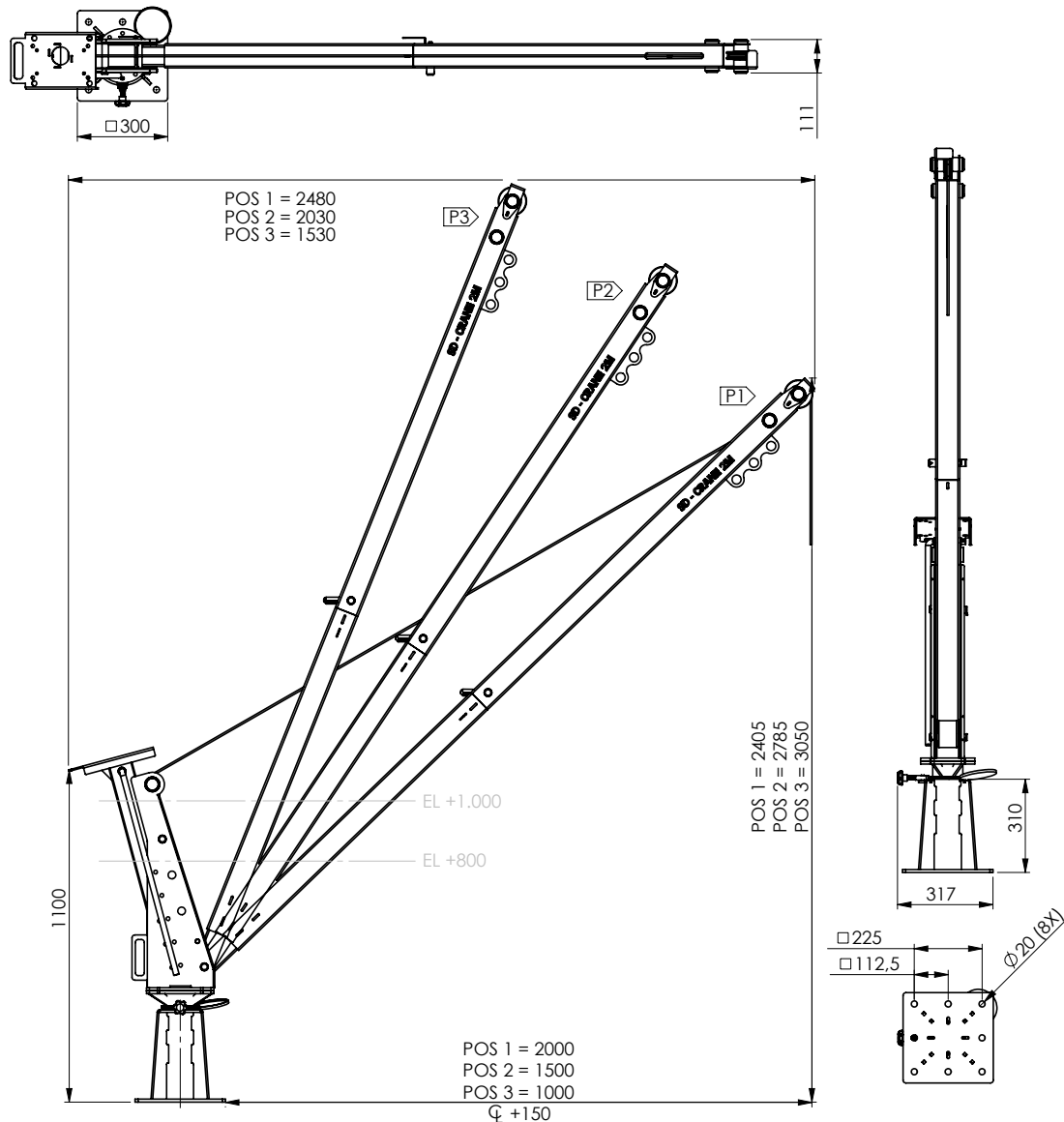
CE Ex  [Product & instruction video on YouTube](#)

GEBUWIN
quality winches

Industrieweg 6, 7102 DZ Winterswijk, The Netherlands
Telephone: +31(0)543 532600 Email: info@gebuwin.com

For more information, visit: www.gebuwin.com

Technical specifications SD900



Technical specifications	Unit	SD900 EV incl. TL1500	SD900 EV incl. CW700
Max capacity reach 1 meter (1st layer)	kg	900	700
Capacity 4th layer	kg	900	475
Capacity last layer	kg	900	290
Max capacity reach 1,5 meter (1st layer)	kg	800	700
Capacity 4th layer	kg	800	475
Capacity last layer	kg	800	290
Max capacity reach 2 meters (1st layer)	kg	600	600
Capacity 4th layer	kg	600	475
Capacity last layer	kg	600	290
Rope storage 1st layer	m	3,5	2
Rope storage 4th layer	m	20	11
Rope storage top layer	m	33	40
Rope diameter-Ø	mm	8	6
MBL of cable	kN	41	23
Lifting speed	m/min	1,2	2,2
Weight (excl. winch)*	kg		49
Weight winch	kg	27	14
Article number (excl. winch)	nr.	77002002	77002001

*each part weighs <23kg