

LOW HEADROOM

TCR-LHR Serie (500, 1.000 & 2.000 kg)



TCR-2000-LHR

Type	TCR-500-LHR	TCR-1000/2-LHR	TCR-1000-LHR	TCR-2000-LHR
WLL	500 kg	1.000 kg	1.000 kg	2.000 kg
Chain falls	1	2	1	2
Chain size	6,3 x 19,1 mm	6,3 x 19,1 mm	7,1 x 21 mm	7,1 x 21 mm
Lifting speed full load	10,5 m/min.	5,3 m/min.	6 m/min.	3 m/min.
Lifting speed w/o full load	16 m/min.	9,5 m/min.	11,3 m/min.	5,7 m/min.
Lowering speed full load	17,9 m/min.	9 m/min.	10,3 m/min.	5,2 m/min.v
Travel speed	9 m/min.	9 m/min.	9 m/min.	9 m/min.
Hoist air consumption	25 l/sec	25 l/sec	25 l/sec	25 l/sec
Trolley air consumption	25 l/sec	25 l/sec	25 l/sec	25 l/sec
Inlet connection	PT 1/2"	PT 1/2"	PT 1/2"	PT 1/2"
Weight with 3h hol	85 kg	90 kg	90 kg	105 kg
Additional metre hol	0,8 kg	1,6 kg	1,1 kg	2,2 kg
Flange range	60 - 300 mm	60 - 300 mm	60 - 300 mm	60 - 300 mm

STANDARD FEATURES

- Toko rotary vane motor
- ATEX zone 2 specification
- Robust 3 step planetary gearbox
- Failsafe automatic internal disc brake
- Choice of pendant controls or control stations
- Mechanical upper & lower switches
- Cast steel housing
- Internal silencing down to 82 dB(A)
- Alloy safety swivel hooks with safety catch
- Built-in load limiter
- Trolley to suit various flange profiles
- Anti-tilt & anti-drop plates
- High efficiency motor gearbox
- Heavy duty sealed wheel bearings
- Wheel profile to suit parallel or tapered flanges

AVAILABLE OPTIONS

- Marine specification
- Special paint systems
- Collision bumpers
- Corrosion protection
- ATEX zone 1 specification

- Chain collectors (galvanised or stainless steel)
- Articulated trolley
- Low headroom units
- Rack & pinion drive
- Travel limits
- Air service units
- Festoon systems
- Radio remote control
- Optional travel speeds
- Beam brake

RECOMMENDED SMC

AIR TREATMENT UNIT

AC40-F04DM-8-B

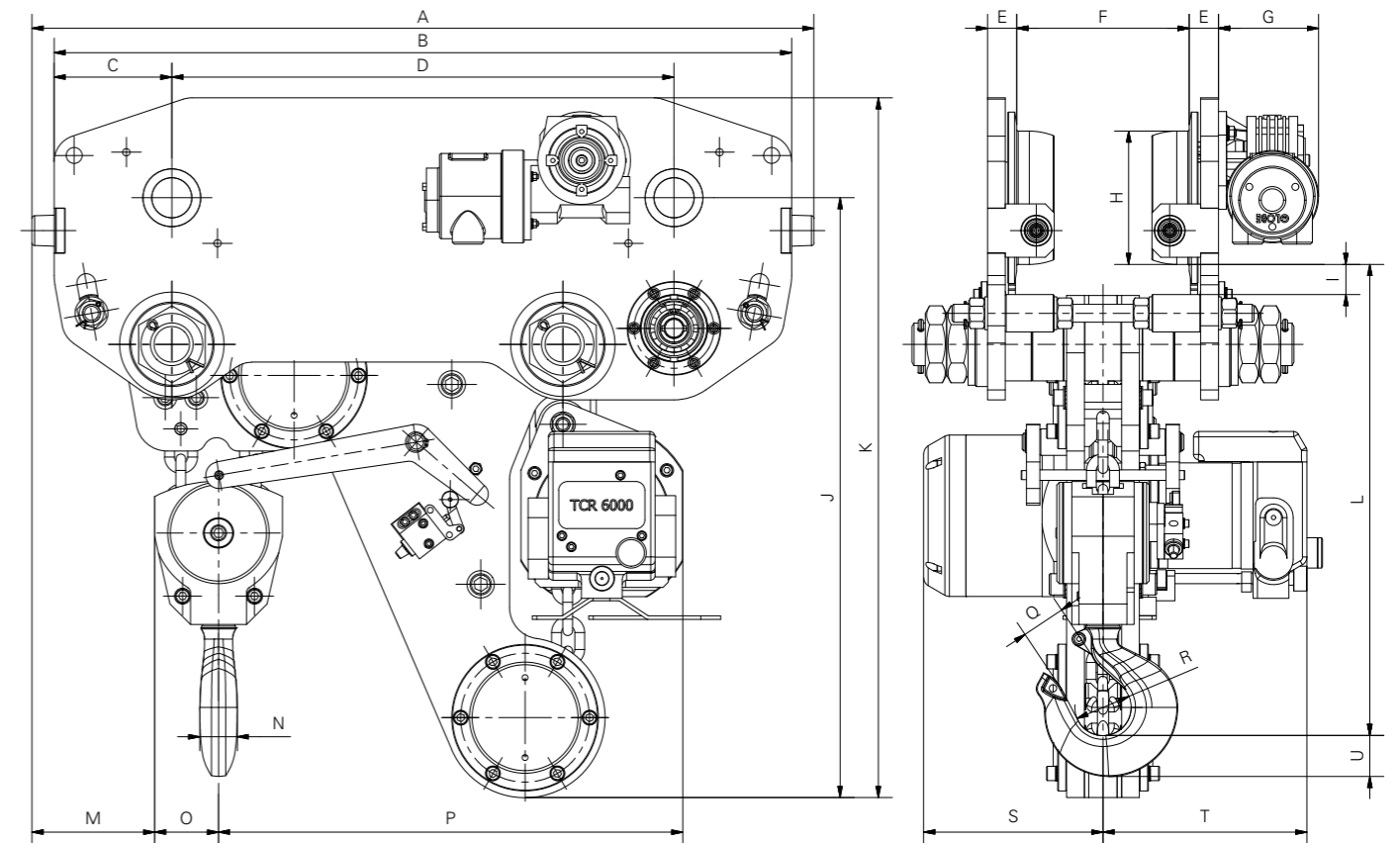
STANDARD VERSION OR

SPARK RESISTANT VERSION

The low head room trolleys are available as standard version (ordernumber TCR-...-LHR) or as spark resistant version with bronze wheels, bronze coated hooks for explosion dangerous areas (ordernumber TCR-....-LHR/ATEX) with ATEX certificate.

LOW HEADROOM

TCR-LHR Serie (500, 1.000 & 2.000 kg)



Model	A	B	C	D	E	F	G	H	I	J	K
TCR-500-LHR	570	520	115	340	21	60~300	135	ø70	30	480	590
TCR-1000/2-LHR	570	520	115	340	21	60~300	135	ø70	30	480	590
TCR-1000-LHR	570	520	115	340	21	60~300	135	ø70	30	480	590
TCR-2000-LHR	570	520	115	340	21	60~300	135	ø70	30	480	590

Model	L	M	N	O	P	Q	R	S	T	U	-
TCR-500-LHR	340	180	25	20	295	30	ø40	186	156	30	
TCR-1000/2-LHR	375	135	25	42	341	30	ø40	186	156	30	
TCR-1000-LHR	340	177	25	23	296	29	ø40	177	157	30	
TCR-2000-LHR	390	124	30	52	320	28	ø40	177	157	40	

All measurements are in mm / Information subject to change without notice



ATEX MARKING

STANDARD ATEX:

GAS
II 3G Ex h IIA T4 Gc

DUST
II 3D Ex h IIIA 135°C Dc

OPTIONAL ATEX:

GAS
II 2G Ex h IIB T4 Gb

DUST
II 2D Ex h IIIB 135°C Db

GAS
II 2G Ex h IIC T4 Gb

DUST
II 2D Ex h IIIC 135°C Db

PENDANT CONTROL



NOTE

- Design can be modified to suit smaller flange sizes.

LOW HEADROOM

TMH-LHR Serie (3.000, 6.000 & 9.000 kg)



TMH-3000-LHR



TMH-6000/2-LHR



TMH-9000/3-LHR

Type	TMH-3000-LHR	TMH-6000/2-LHR	TMH-9000/3-LHR
WLL	3000 kg	6000 kg	9000 kg
Chain falls	1	2	3
Chain size	13x36 mm	13x36 mm	13x36 mm
Lifting speed full load	5,4 m/min.	2,7 m/min.	1,8 m/min.
Lifting speed w/o full load	10,8 m/min.	5,4 m/min.	3,6 m/min.
Lowering speed full load	10,2 m/min.	5,1 m/min.	3,4 m/min.
Travel speed	6,0 m/min.	6,0 m/min.	6,0 m/min.
Hoist air consumption	56 l/sec	56 l/sec	56 l/sec
Trolley air consumption	25 l/sec	25 l/sec	40 l/sec
Inlet connection	PT 1"	PT 1"	PT 1"
Weight with 3h hol	275 kg	300 kg	375 kg
Additional metre hol	3,8 kg	7,6 kg	11,4 kg
Flange range	110 - 300 mm	110 - 300 mm	110 - 300 mm

STANDARD FEATURES

- Toku rotary vane motor
- ATEX zone 2 specification
- Robust 3 step planetary gearbox
- Failsafe automatic internal disc brake
- Choice of pendant controls or control stations
- Mechanical upper & lower switches
- Cast steel housing
- Internal silencing down to 82 dB(A)
- Alloy safety swivel hooks with safety catch
- Load chain 13 x 36 mm of European manufacture to EN818-7
- Built-in load limiter
- Trolley to suit various flange profiles
- Anti-tilt & anti-drop plates
- High efficiency motor gearbox
- Heavy duty sealed wheel bearings
- Wheel profile to suit parallel or tapered flanges

AVAILABLE OPTIONS

- Marine specification
- Special paint systems
- Collision bumpers
- Corrosion protection
- ATEX zone 1 specification

- Chain collectors (galvanised or stainless steel)
- Articulated trolley
- Low headroom units
- Rack & pinion drive
- Travel limits
- Air service units
- Festoon systems
- Radio remote control
- Optional travel speeds
- Beam brake

RECOMMENDED SMC AIR

TREATMENT UNIT

TMH-3000 & TMH-6000/2:

AC60-F10DM-8-B

TMH-9000/3: SO-112392-AC825-14

STANDARD VERSION OR SPARK RESISTANT VERSION

The low head room trolleys are available as standard version (ordernumber TMH-...-LHR) or as spark resistant version with bronze wheels, bronze coated hooks for explosion dangerous areas (ordernumber TMH-...-LHR/ATEX) with ATEX certificate.

STANDARD ATEX:

GAS

II 3G Ex h IIA T4 Gc

DUST

II 3D Ex h IIIA 135°C Dc

OPTIONAL ATEX:

GAS

II 2G Ex h IIB T4 Gb

DUST

II 2D Ex h IIIB 135°C Db

GAS

II 2G Ex h IIC T4 Gb

DUST

II 2D Ex h IIIC 135°C Db

PENDANT CONTROL

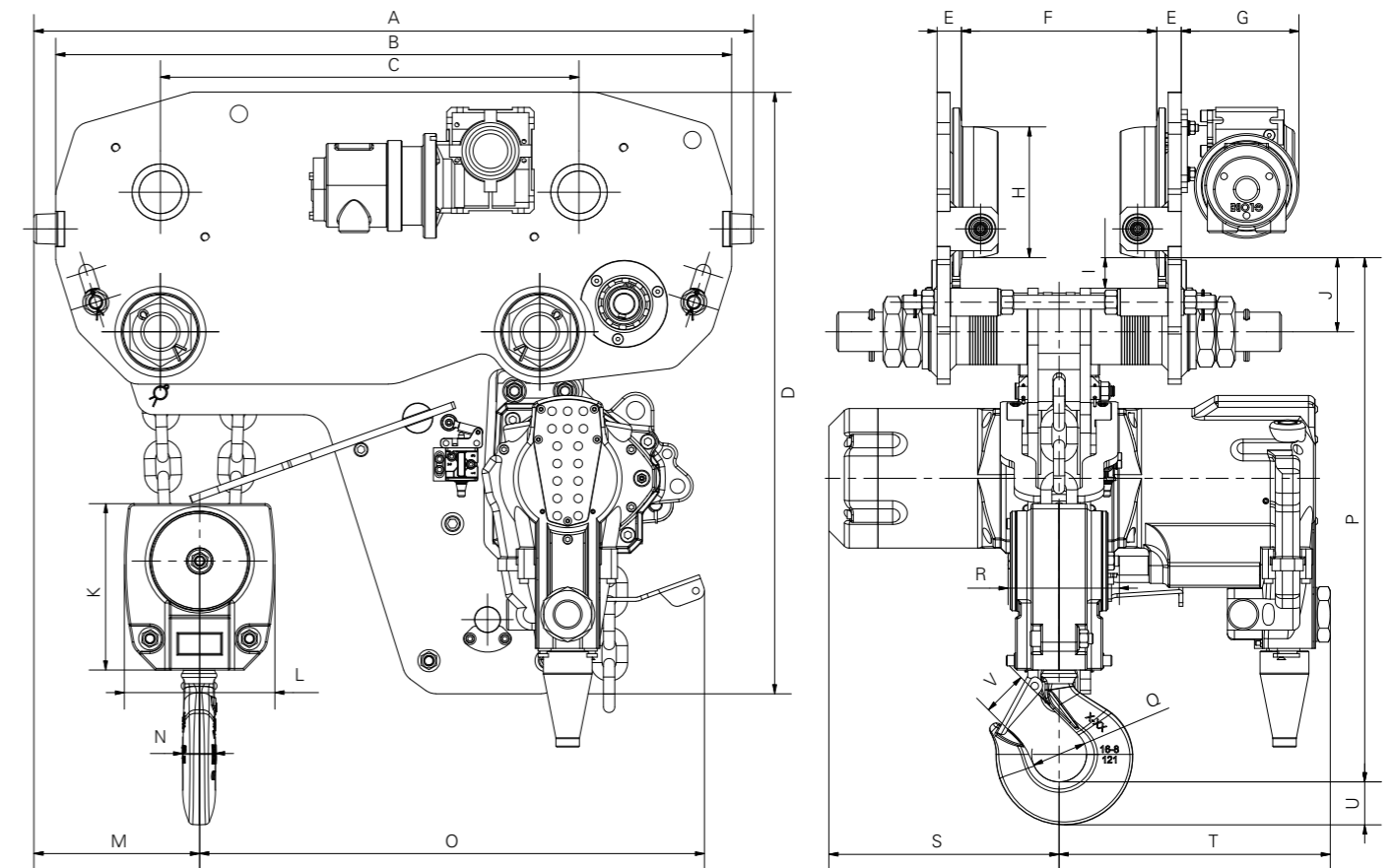


ATEX MARKING



LOW HEADROOM

TMH-LHR Serie (3.000, 6.000 & 9.000 kg)



Model	A	B	C	D	E	F	G	H	I	J	K
TMH-3000-LHR	825	775	480	690	28	110~300	135	ø150	35 max.	85	72
TMH-6000-LHR	825	775	480	690	28	110~300	135	ø150	35 max.	85	191
TMH-9000-LHR	1030	980	650	735	33	110~300	185	ø150	50 max.	105	200

Model	L	M	N	O	P	Q	R	S	T	U	V
TMH-3000-LHR	85	240	40	528	488	ø48	80	264	314	46	39
TMH-6000-LHR	173	190	37	579	505	ø63	127	264	311	49	52
TMH-9000-LHR	270	305	43	624	565	ø75	130	264	311	60	53

All measurements are in mm / Information subject to change without notice

NOTE

- Design can be modified to suit smaller flange sizes.

LOW HEADROOM

TMH-LHR Serie (12.000 & 15.000 kg)



TMH-12000/4-LHR



TMH-15000/5-LHR

Type	TMH-12000/4-LHR	TMH-15000/5-LHR
WLL	12.000 kg	15.000 kg
Chain falls	4	5
Chain size	13 x 36 mm	13 x 36 mm
Lifting speed full load	1,35 m/min.	1,08 m/min.
Lifting speed w/o load	2,7 m/min.	2,16 m/min.
Lowering speed full load	2,55 m/min.	2,04 m/min.
Travel speed	6 m/min.	6 m/min.
Hoist air consumption	56 l/sec	56 l/sec
Trolley air consumption	40 l/sec	40 l/sec
Inlet connection	PT 1"	PT 1"
Weight with 3h hol	400 kg	550 kg
Additional metre hol	15,2 kg	19,0 kg
Flange range	110 - 300 mm	110 - 300 mm

STANDARD FEATURES

- Toku rotary vane motor
- ATEX zone 2 specification
- Robust 3 step planetary gearbox
- Failsafe automatic internal disc brake
- Choice of pendant controls or control stations
- Mechanical upper & lower switches
- Cast steel housing
- Internal silencing down to 82 dB(A)
- Alloy safety swivel hooks with safety catch
- Load chain 13 x 36 mm of European manufacture to EN818-7
- Built-in load limiter
- Trolley to suit various flange profiles
- Anti-tilt & anti-drop plates
- High efficiency motor gearbox
- Heavy duty sealed wheel bearings
- Wheel profile to suit parallel or tapered flanges

AVAILABLE OPTIONS

- Marine specification
- Special paint systems
- Collision bumpers
- Corrosion protection

- ATEX zone 1 specification
- Chain collectors (galvanised or stainless steel)
- Articulated trolley
- Low headroom units
- Rack & pinion drive
- Travel limits
- Air service units
- Festoon systems
- Radio remote control
- Optional travel speeds
- Beam brake

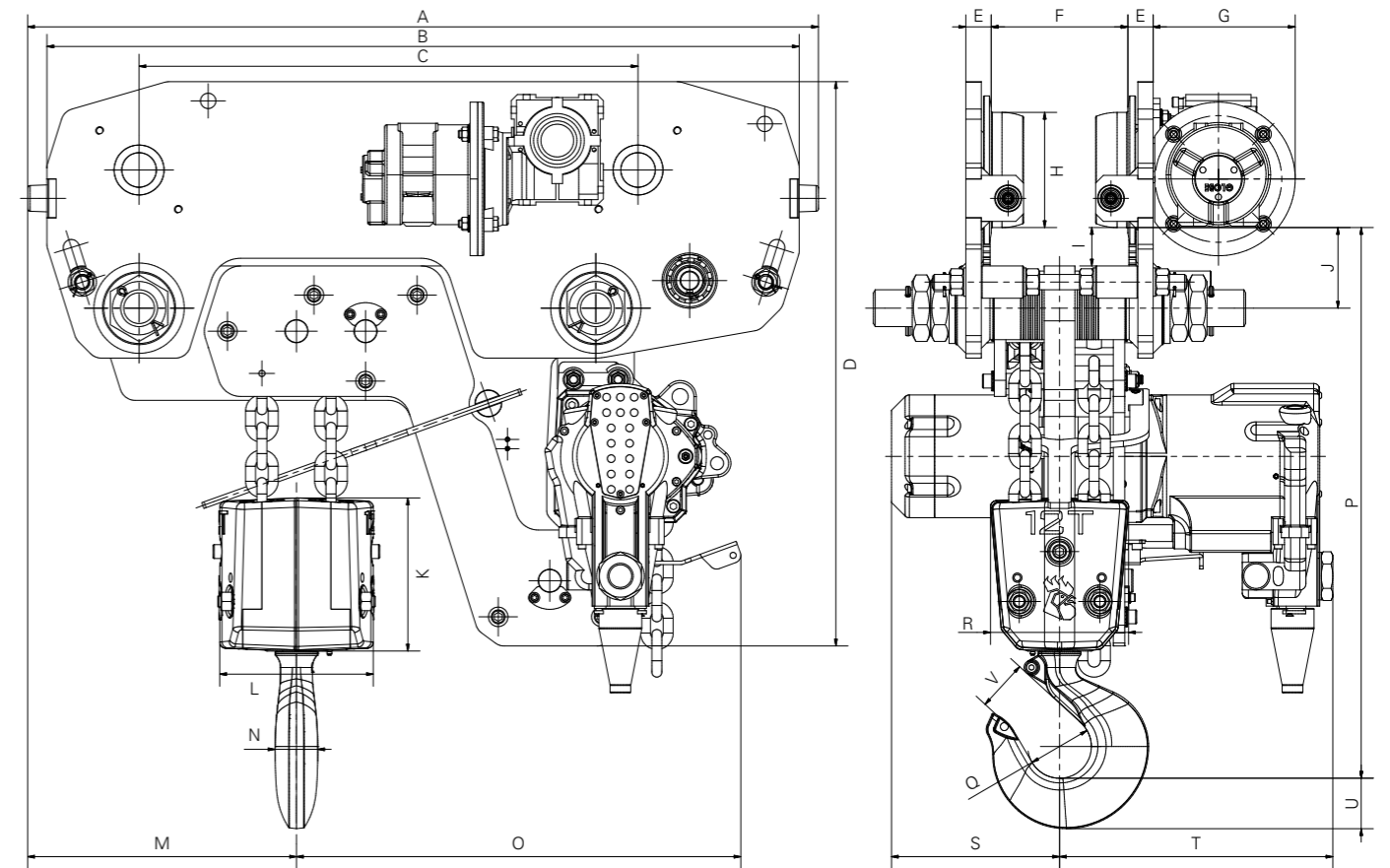
RECOMMENDED SMC AIR TREATMENT UNIT AC40-F04DM-8-B

STANDARD VERSION OR SPARK RESISTANT VERSION

The low head room trolleys are available as standard version (ordernumber TMH-...-LHR) or as spark resistant version with bronze wheels, bronze coated hooks for explosion dangerous areas (ordernumber TMH-...-LHR/ATEX) with ATEX certificate.

LOW HEADROOM

TMH-LHR Serie (12.000 & 15.000 kg)



Model	A	B	C	D	E	F	G	H	I	J	K
TMH-12000/4-LHR	1030	980	650	735	33	140~300	185	ø150	50 max.	105	200
TMH-15000/5-LHR	1065	1015	645	760	40	155~300	194	ø180	50 max.	105	220

Model	L	M	N	O	P	Q	R	S	T	U	V
TMH-12000/4-LHR	200	350	57	579	600 min.	ø84	180	219	356	67	58
TMH-15000/5-LHR	305	303	52	640	620 min.	ø84	200	300	275	67	58

All measurements are in mm / Information subject to change without notice



ATEX MARKING

STANDARD ATEX:

GAS
II 3G Ex h IIA T4 Gc
DUST
II 3D Ex h IIIA 135°C Dc

OPTIONAL ATEX:

GAS
II 2G Ex h IIB T4 Gb
DUST
II 2D Ex h IIIB 135°C Db

GAS
II 2G Ex h IIC T4 Gb
DUST
II 2D Ex h IIIC 135°C Db

PENDANT CONTROL



NOTE

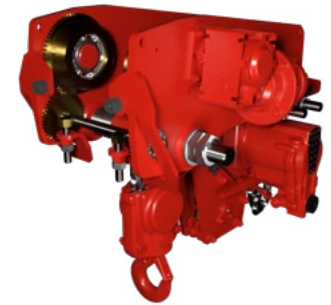
- Design can be modified to suit smaller flange sizes.

LOW HEADROOM

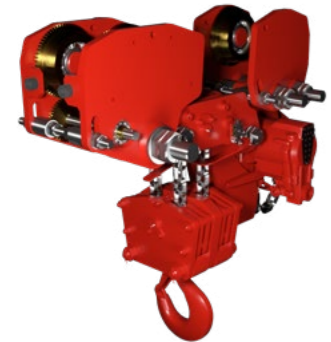
TMH-LHR Serie (10.000, 15.000 & 20.000 kg)



TMH-15/3-LHR



TMH-10/2-LHR



TMH-20/4-LHR

Type	TMH-10/2-LHR	TMH-15/3-LHR	TMH-20/4-LHR
WLL	10.000 kg	15.000 kg	20.000 kg
Chain falls	2	3	4
Chain size	16 x 45 mm	16 x 45 mm	16 x 45 mm
Lifting speed full load	1,6 m/min.	1,05 m/min.	0,8 m/min.
Lifting speed w/o load	3,3 m/min.	2,2 m/min.	1,6 m/min.
Lowering speed full load	3,2 m/min.	2,1 m/min.	1,6 m/min.
Travel speed	8 m/min.	6,8 m/min.	6 m/min.
Hoist air consumption	58 l/sec	58 l/sec	58 l/sec
Trolley air consumption	40 l/sec	40 l/sec	40 l/sec
Inlet connection	PT 1"	PT 1"	PT 1"
Weight with 3h hol	465 kg	675 kg	610 kg
Additional metre hol	11,4 kg	17,1 kg	22,8 kg
Flange range	160 - 300 mm	145 - 300 mm	110 - 300 mm

STANDARD FEATURES

- Toku rotary vane motor
- ATEX zone 2 specification
- Robust 3 step planetary gearbox
- Failsafe automatic internal disc brake
- Choice of pendant controls or control stations
- Mechanical upper & lower switches
- Cast steel housing
- Internal silencing down to 82 dB(A)
- Alloy safety swivel hooks with safety catch
- Load chain 13 x 36 mm of European manufacture to EN818-7
- Built-in load limiter
- Trolley to suit various flange profiles
- Anti-tilt & anti-drop plates
- High efficiency motor gearbox
- Heavy duty sealed wheel bearings
- Wheel profile to suit parallel or tapered flanges

AVAILABLE OPTIONS

- Marine specification
- Special paint systems
- Collision bumpers
- Corrosion protection

- ATEX zone 1 specification
- Chain collectors (galvanised or stainless steel)
- Articulated trolley
- Low headroom units
- Rack & pinion drive
- Travel limits
- Air service units
- Festoon systems
- Radio remote control
- Optional travel speeds
- Beam brake

RECOMMENDED SMC AIR TREATMENT UNIT

SO-112392-AC825-14

STANDARD VERSION OR SPARK RESISTANT VERSION

The low head room trolleys are available as standard version (ordernumber TMH-...-LHR) or as spark resistant version with bronze wheels, bronze coated hooks for explosion dangerous areas (ordernumber TMH-...-LHR/ATEX) with ATEX certificate.



ATEX MARKING

STANDARD ATEX:

GAS
II 3G Ex h IIA T4 Gc
DUST
II 3D Ex h IIIA 135°C Dc

OPTIONAL ATEX:

GAS
II 2G Ex h IIB T4 Gb
DUST
II 2D Ex h IIIB 135°C Db

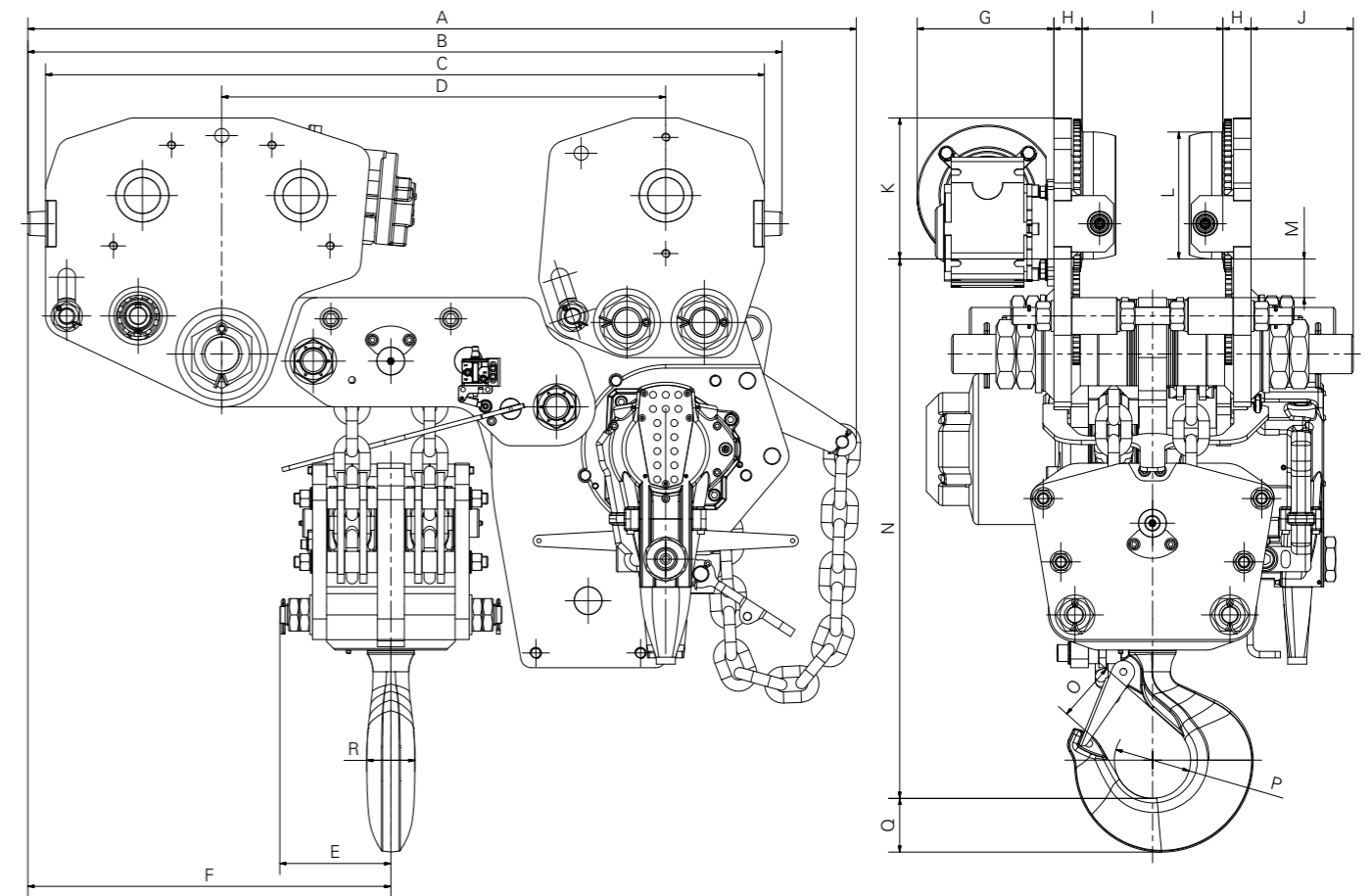
GAS
II 2G Ex h IIC T4 Gb
DUST
II 2D Ex h IIIC 135°C Db

PENDANT CONTROL



LOW HEADROOM

TMH-LHR Serie (10.000, 15.000 & 20.000 kg)



Model	A	B	C	D	E	F	G	H	I
TMT-10/2-LHR	948	790	740	515	107	273	123	35	160-300
TMH-15/3-LHR	1165	1040	990	690	180	435	140	48	145-300
TMH-20/4-LHR	1175	1070	1020	630	157,5	515	194	40	110-300

Model	J	K	L	M	N	O	P	Q	R
TMT-10/2-LHR	194	/	ø180	50 max.	560	45	ø60	65	35
TMH-15/3-LHR	207	/	ø225	50 max.	646	58	ø84	67	52
TMH-20/4-LHR	145	200	ø180	55 max.	695 min.	78	ø110	80	64

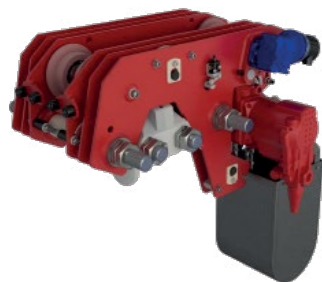
All measurements are in mm / Information subject to change without notice

NOTE

- Design can be modified to suit smaller flange sizes.

ULTRA LOW HEADROOM

TMH-ULHR Serie (6.000 & 12.000 kg)



TMH-6000/2-ULHR

Type	TMH-6000/2-ULHR	TMH-12000/4-ULHR
WLL	6.000 kg	12.000 kg
Chain falls	2	4
Chain size	13 x 36 mm	13 x 36 mm
Lifting speed full load	2,7 m/min.	1,35 m/min.
Lifting speed w/o full load	5,4 m/min.	2,7 m/min.
Lowering speed full load	5,1 m/min.	2,55 m/min.
Travel speed	9 m/min.	6 m/min.
Hoist air consumption	56 l/sec	56 l/sec
Trolley air consumption	25 l/sec	40 l/sec
Inlet connection	PT 1"	PT 1"
Weight with 3h hol	400 kg	465 kg
Additional metre hol	7,6 kg	15,2 kg
Flange range	100 - 300 mm	110 - 300 mm

STANDARD FEATURES

- Toku rotary vane motor
- ATEX zone 2 specification
- Robust 3 step planetary gearbox
- Failsafe automatic internal disc brake
- Choice of pendant controls or control stations
- Mechanical upper & lower switches
- Cast steel housing
- Internal silencing down to 82 dB(A)
- Alloy safety swivel hooks with safety catch
- Load chain 13 x 36 mm of European manufacture to EN818-7
- Built-in load limiter
- Trolley to suit various flange profiles
- Anti-tilt & anti-drop plates
- High efficiency motor gearbox
- Heavy duty sealed wheel bearings
- Wheel profile to suit parallel or tapered flanges

AVAILABLE OPTIONS

- Marine specification
- Special paint systems
- Collision bumpers

- Corrosion protection
- ATEX zone 1 specification
- Chain collectors (galvanised or stainless steel)
- Articulated trolley
- Low headroom units
- Rack & pinion drive
- Travel limits
- Air service units
- Festoon systems
- Radio remote control
- Other travel speeds
- Beam brake

RECOMMENDED SMC AIR TREATMENT UNIT

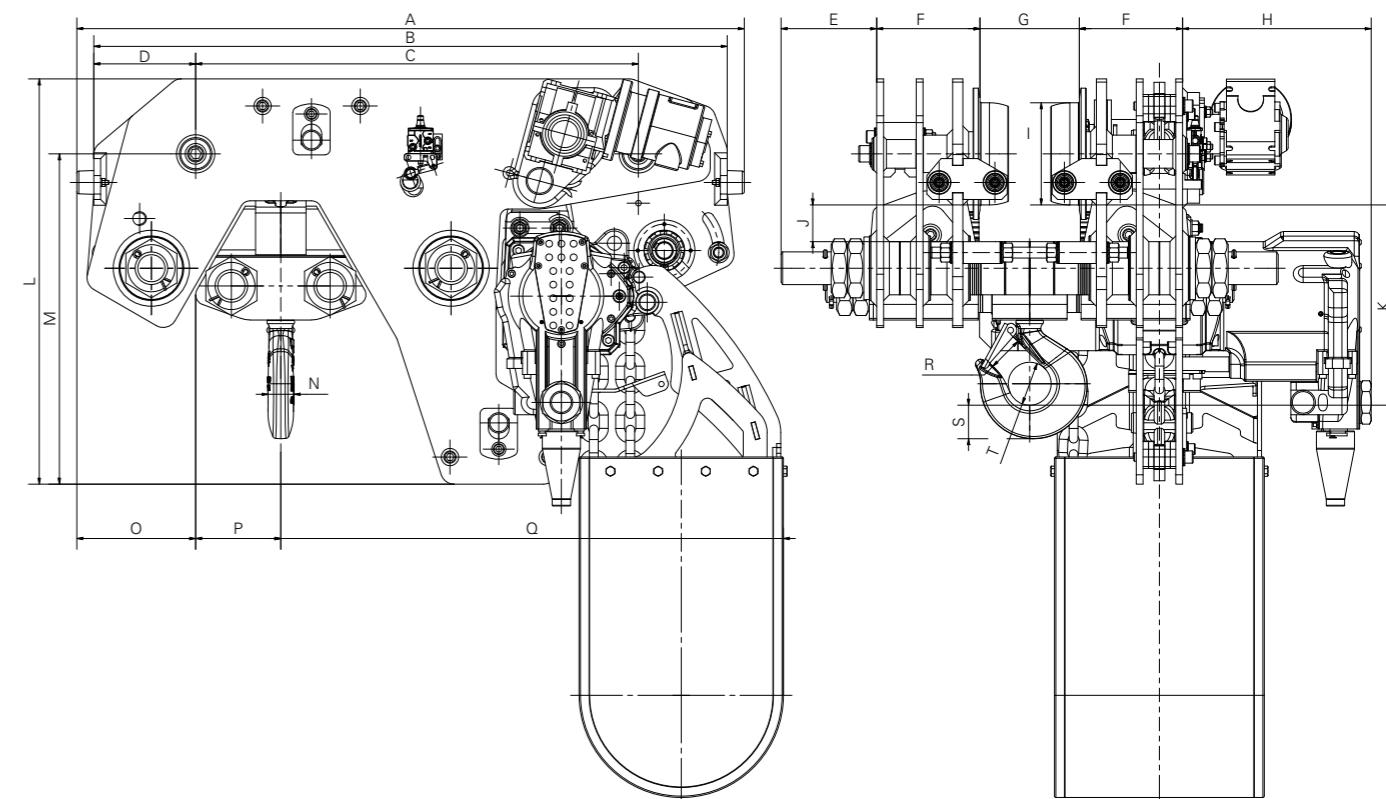
SO-112392-AC825-14

STANDARD VERSION OR SPARK RESISTANT VERSION

The low head room trolleys are available as standard version (ordernumber TMH-...-ULHR) or as spark resistant version with bronze wheels, bronze coated hooks for explosion dangerous areas (ordernumber TMH-...-ULHR) with ATEX certificate.

ULTRA LOW HEADROOM

TMH-ULHR Serie (6.000 & 12.000 kg)



Model	A	B	C	D	E	F	G	H	I	J
TMH-6000/2-ULHR	980	930	650	150	140	152	100~300	ø277	ø150	54 max.
TMH-12000/4-ULHR	980	930	650	150	140	152	100~300	ø277	ø150	54 max.

Model	K	L	M	N	O	P	Q	R	S	T
TMH-6000/2-ULHR	294 min.	595	485	37	175	125	738	43 max.	49	ø62
TMH-12000/4-ULHR	294 min.	595	485	37	175	125	738	43 max.	49	ø62

All measurements are in mm / Information subject to change without notice



ATEX MARKING

STANDARD ATEX:

GAS
II 3G Ex h IIA T4 Gc
DUST
II 3D Ex h IIIA 135°C Dc

OPTIONAL ATEX:

GAS
II 2G Ex h IIB T4 Gb
DUST
II 2D Ex h IIIB 135°C Db

GAS
II 2G Ex h IIC T4 Gb
DUST
II 2D Ex h IIIC 135°C Db

PENDANT CONTROL



NOTES

- Design can be modified to suit smaller flange sizes.
- At this moment the dimensions and drawings of the TMH-12000/4-ULHR are only available on request or check our website for the most up-to-date information.

ULTRA LOW HEADROOM

TMH-ULHR Serie (10.000 & 20.000 kg)



TMH-10/2-ULHR

Type	TMH-10/2-ULHR	TMH-20/4-ULHR
WLL	10.000 kg	20.000 kg
Chain falls	2	4
Chain size	16x45 mm	16x45 mm
Lifting speed full load	1,6 m/min.	0,8 m/min.
Lifting speed w/o load	3,5 m/min.	1,6 m/min.
Lowering speed full load	3,2 m/min.	1,6 m/min.
Travel speed	6 m/min.	6 m/min.
Hoist air consumption	58 l/sec	58 l/sec
Trolley air consumption	40 l/sec	40 l/sec
Inlet connection	PT 1"	PT 1"
Weight with 3h hol	680 kg	1.155 kg
Additional metre hol	11,4 kg	22,8 kg
Flange range	230 - 300 mm	250 - 320 mm

STANDARD FEATURES

- Toku rotary vane motor
- ATEX zone 2 specification
- Robust 3 step planetary gearbox
- Failsafe automatic internal disc brake
- Choice of pendant controls or control stations
- Mechanical upper & lower switches
- Cast steel housing
- Internal silencing down to 82 dB(A)
- Alloy safety swivel hooks with safety catch
- Load chain 13 x 36 mm of European manufacture to EN818-7
- Built-in load limiter
- Trolley to suit various flange profiles
- Anti-tilt & anti-drop plates
- High efficiency motor gearbox
- Heavy duty sealed wheel bearings
- Wheel profile to suit parallel or tapered flanges

AVAILABLE OPTIONS

- Marine specification
- Special paint systems
- Collision bumpers

- Corrosion protection
- ATEX zone 1 specification
- Chain collectors (galvanised or stainless steel)
- Articulated trolley
- Low headroom units
- Rack & pinion drive
- Travel limits
- Air service units
- Festoon systems
- Radio remote control
- Other travel speeds
- Beam brake

RECOMMENDED SMC AIR TREATMENT UNIT

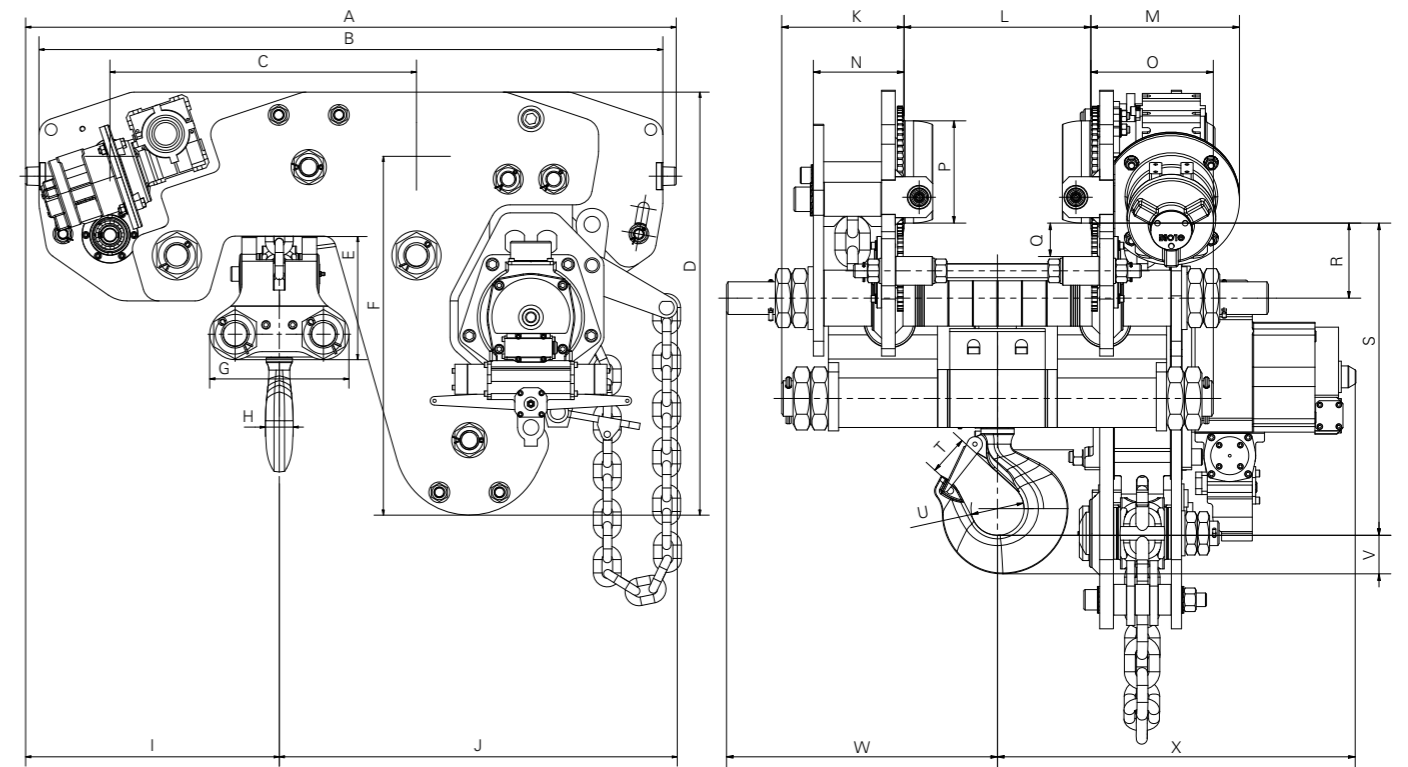
SO-112392-AC825-14

STANDARD VERSION OR SPARK RESISTANT VERSION

The low head room trolleys are available as standard version (ordernumber TMH-...-ULHR) or as spark resistant version with bronze wheels, bronze coated hooks for explosion dangerous areas (ordernumber TMH-...-LHR/ATEX) with ATEX certificate.

ULTRA LOW HEADROOM

TMH-ULHR Serie (10.000 & 20.000 kg)



Model	A	B	C	D	E	F	G	H	I	J	K	L
TMH-10/2-ULHR	1215	1165	573	790	230	670	260	43	474	743	180	230~300
TMH-20/4-ULHR	1215	1165	573	790	230	670	260	43	474	743	180	230~300

Model	M	N	O	P	Q	R	S	T	U	V	W	X
TMH-10/2-ULHR	218	133	180	ø150	50 max.	110	440	53	ø75	60	398	525
TMH-20/4-ULHR	218	133	180	ø150	50 max.	110	440	53	ø75	60	398	525

All measurements are in mm / Information subject to change without notice



ATEX MARKING

STANDARD ATEX:

GAS
II 3G Ex h IIA T4 Gc
DUST
II 3D Ex h IIIA 135°C Dc

OPTIONAL ATEX:

GAS
II 2G Ex h IIB T4 Gb
DUST
II 2D Ex h IIIB 135°C Db

GAS
II 2G Ex h IIC T4 Gb
DUST
II 2D Ex h IIIC 135°C Db

PENDANT CONTROL



NOTES

- Design can be modified to suit smaller flange sizes.
- At this moment the dimensions and drawings of the TMH-12000/4-ULHR are only available on request or check our website for the most up-to-date information.